



# DARTFORD & GRAVESHAM

Crime and Disorder Reduction Partnership



COMMUNITY SAFETY PLAN  
2008 - 2011



## CONTENTS

---

<b>1. Introduction</b>	page 1
<b>2. Mission Statement / Vision</b>	page 1
<b>3. Summary of Priority Areas</b>	page 2
<b>4. Area Profile</b>	page 3
<b>5. The Crime and Disorder Reduction Partnership</b>	page 4
❖ <b>The Statutory Agencies</b>	
❖ <b>Partnership Organisational Structure</b>	
❖ <b>Link with the Local Strategic Partnership</b>	
<b>6. Explanation of PSA's &amp; LAA's</b>	page 6
<b>7. Glossary of Terms</b>	page 8
<b>8. Agency Contact Details</b>	page 9
<b>Appendix 1 – Year One Action Plan (2008/09)</b>	page 10



## 1. INTRODUCTION

---

Community safety and anti-social behaviour are phrases used regularly these days; by Government and other agencies, by the media and by residents and businesses alike. Although the definitions can seem complex and confusing, in essence, community safety is about working in partnership, not only to tackle crime and reduce anti-social behaviour, but also to ensure that people's perceptions and fear of crime is not exaggerated and out of proportion to the reality.

It is the job of the Dartford and Gravesham Crime and Disorder Reduction Partnership (CDRP) to tackle anti-social behaviour, crime and the fear of crime. CDRP's were born out of the 1998 Crime and Disorder Act which placed a statutory duty on local councils, police and other agencies to work together to tackle crime.

This plan sets the focus and direction the Dartford and Gravesham CDRP will take over the next three years, 2008-2011 and will be revised and refreshed annually. It replaces the individual plans for Dartford and Gravesham which covered the period 2005-2008.

Partnership working is crucial to successfully tackling the issues that affect our communities and our individual quality of life. Appendix 1 details the activities and initiatives to be undertaken over the first year of this plan, 2008-2009. It does not include the multitude of initiatives already being undertaken, or that will be undertaken, by our partner agencies, Parish Councils and community groups, as part of their core day to day business.

## 2. MISSION STATEMENT / VISION FOR 2008 - 2011

---

It is the aim of the Dartford and Gravesham Crime and Disorder Reduction Partnership to;

### **'Create a safer, cleaner place to live, work and socialise'**

We will achieve this by;

- ❖ Actively promoting partnership working to reduce crime and the fear of crime.
- ❖ Effectively tackling all incidents of anti-social behaviour and environmental crime.
- ❖ Quickly identifying geographical areas or 'hot spots' suffering increased crime or anti-social behaviour as they arise by utilising crime analysis techniques and enabling effective partnership working to reduce crime in those areas.
- ❖ Ensuring that community cohesion and diversity are fully embraced in all aspects of the Partnership's work.
- ❖ Supporting sustainable economic development so that businesses can flourish and investment can be encouraged.



### 3. SUMMARY OF PRIORITY AREAS YEAR ONE - 2008/2009

---

The following priority areas have been drawn out of a Strategic Assessment that was carried out during late 2007 and early 2008. It identified these priorities by considering the existing levels, historic trends and changes in the pattern of crime in the boroughs of Dartford and Gravesham and included information about other types of incident that affect perceptions of crime and community safety, such as the number of abandoned vehicles removed or the extent of graffiti and the speed at which it is cleaned up. Additionally the priorities take account of ongoing communication with local groups including the Youth Council, Elderly Forum

The priorities also incorporate the aims of the new Local Area Agreement with the Kent Partnership<sup>1</sup>, which is known as the Kent Agreement 2, and will come into being later this year, as well as the Public Service Agreement's set out by the Government's National Community Safety Plan 2008/11. Both are explained in more detail in section 6 of this document.

The priorities are set out below in alphabetical order.

---

❖ Priority Area: **ACQUISITIVE CRIME**

Key aims: to reduce shop lifting, burglary and vehicle crimes such as theft from a vehicle; of a vehicle and vehicle interference.

❖ Priority Area: **ANTI-SOCIAL BEHAVIOUR**

Key aims: to reduce street nuisance (i.e. rowdy and loutish behaviour) and criminal damage (vandalism and graffiti). To tackle community issues including vehicle nuisance, litter, noise and environmental crime such as fly-tipping and abandoned vehicles.

❖ Priority Area: **PUBLIC CONFIDENCE**

Key aims: to increase the number of people feeling safe and reduce the fear of crime by being more citizen focused in our approach, reflecting the needs and expectations of our communities. We will keep communities informed of the actions undertaken by the partnership in tackling their concerns and seek feedback on the progress of those actions.

❖ Priority Area: **SUBSTANCE MISUSE**

Key aims: to disrupt the illegal drugs markets and to raise the awareness of the harm caused by drugs and alcohol and reduce underage drinking.

❖ Priority Area: **VIOLENT CRIME**

Key aims: to reduce violent crime, including sexual offences, violence in the night time economy and repeat incidents of domestic abuse.

❖ Priority Area: **YOUNG PEOPLE**

Key aims: to ensure the safety of young people, reduce the risk of young people being victimised or becoming involved in criminal behaviour and to encourage a positive profile of young people in the community.

---

<sup>1</sup> The Kent Partnership is the countywide local strategic partnership that was formed in 2002 as a result of the Local Government Act 2000. It is made up of representatives from the private, public, voluntary and community sectors.



## 4. AREA PROFILE

### ❖ Location

The boroughs of Dartford and Gravesham sit along the south bank of the Thames on the border with London and make up part of the area known as the Kent Thameside. This is an area of major regeneration<sup>2</sup> and has been described as;<sup>3</sup>

*‘a great place to invest, live and work. It is a fantastic location, close to the capital and the gateway to Europe. It has thriving and diverse local communities, brownfield land for new jobs and homes, and beautiful green spaces with the Thames estuary at its heart. It is a place of great potential.’*

The area is unique and has some major attraction's, it hosts the Bluewater shopping centre which is the largest centre in the UK with over 300 shops and restaurants. 2007 saw the opening of the Ebbsfleet International station. This has provided the area with excellent transport links with Europe and when domestic services open in 2009, with a planned journey time of 17 minutes, London will be brought even closer.

Dartford and Gravesend are the main town and population centres for both boroughs, each having a thriving night time economy. However urban areas account for a comparatively small part with rural wards making up the more substantial area.

### ❖ Population

Currently Dartford and Gravesham have a combined population of 191,800 which is expected to rise to 212,500 by 2016<sup>4</sup>, an increase of 11%. This growth will be driven by the regeneration with 25,000 homes to be developed by 2026 (15,700 in Dartford and 9,300 in Gravesham).

In terms of diversity ethnic groups make up 5.5% of the population in Dartford and 12.8% in Gravesham. As a proportion of its overall population Gravesend has the largest Sikh population in the UK.

Across both boroughs young people aged 10-19 years old make up 13% of the population forming a significant part of local communities. Adults aged 35 to 49 make up the second largest population group in Dartford, with adults aged 40 to 64 forming the largest population group in Gravesham next to children aged 5 to 19.

The population growth is expected to lead to a rise in the numbers of young people, including those seeking employment and housing. It is also expected to lead to a growth in the retirement population. With such a high proportion of young people across the boroughs their wellbeing, involvement and contribution to their communities needs to be supported and encouraged.

<sup>2</sup> The Thames Gateway has been designated by the European Union as a priority region for regeneration to housing, business and amenities. Over £18.5 million of European and local funding has is or has been invested in the area.

<sup>3</sup> Described by Yvette Cooper MP, chair of the Thames Gateway Strategic Partnership.

<sup>4</sup> Figure from the Department for Communities and Local Government.



It is the scale of regeneration that will provide the greatest challenges, and also opportunities, for the CDRP.

The expected growth in population will change the area profile and the extent to which regeneration can mesh new with old will be key to creating cohesive and sustainable communities.

The addition of new EU member states and the work opportunities offered by the regeneration throughout the Thames Gateway is expected to attract immigrant workers to North Kent, further increasing our ethnic mix and diversity.

Proximity to London and a location at the heart of so many major transport links creates opportunities for crime which will shift and change over time.

The CDRP will need to be dynamic and adapt to meet these new challenges. We are committed to this and, through effective partnership working, are determined to continue to reduce crime and tackle anti-social behaviour.

## 5. THE PARTNERSHIP

---

During 2006 the Home Office Standards Directorate carried out a review of the two existing CDRP's within Dartford and Gravesham. The subsequent report made the recommendation that the two CDRP's merge to form one partnership. Work on the merger was completed during 2006, and the first meeting of the informally merged partnership was held in December 2006. The partnership was formally established in July 2007.

In 2006, the Home Office undertook a review of the partnership provisions of the Crime and Disorder Act 1998 and the Police Reform Act 2002. The review process has developed and strengthened the existing provisions and introduces six hallmarks of effective practice and a new set of minimum standards, which came into force in England in August 2007<sup>5</sup>. Each Hallmark comprises both statutory elements and suggested good practice and the CDRP responsible authorities have a legal obligation to comply.

The 1998 Act included a requirement on Crime and Disorder Reduction Partnerships to produce a crime and disorder audit; consult with key agencies and the wider community; and use the findings to identify strategic priorities and set performance measures for a three-year strategy. The new legislation repeals the requirement to produce Crime and Disorder Audits and Strategies and replaces this with a new requirement for the strategy group to:

- ❖ Prepare a strategic assessment each year, and
- ❖ Publish a three-year partnership plan on 1<sup>st</sup> April 2008 (refreshed annually on the basis of the strategic assessment).

---

<sup>5</sup> The Statutory Instrument for this is referred to as the Crime and Disorder Regulations 2007 and can be viewed at <http://www.crimereduction.gov.uk/regions/regions00.htm> under the link National Minimum Standards and advice and guidance on the new legislation and Hallmarks of Effective Practice can be viewed in the Home Office document 'Delivering Safer Communities: a guide to effective partnership working' 2007.

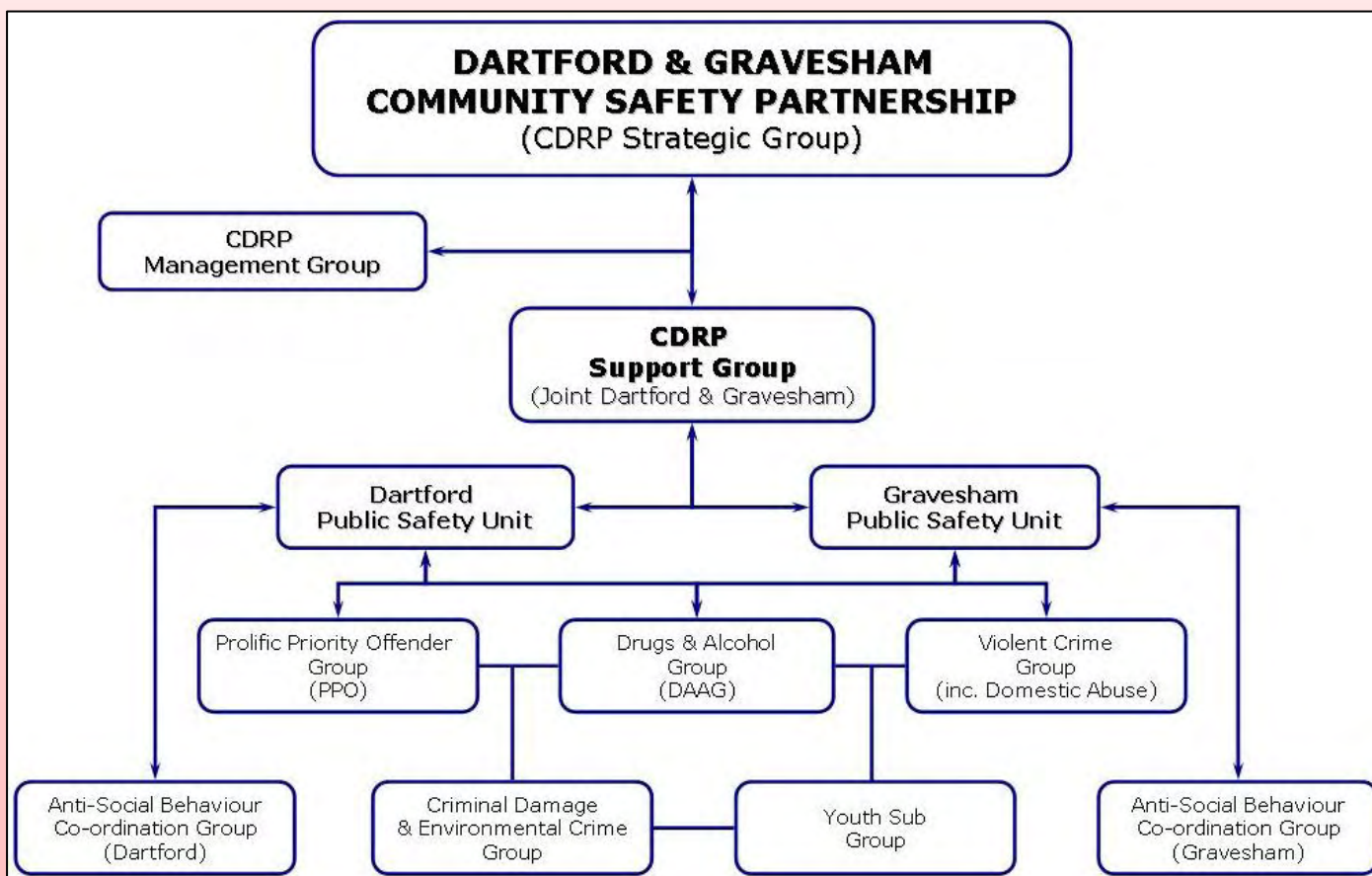


**The Statutory Agencies**



**Partnership Organisational Structure**

The merged partnership consists of the Strategic Group, formed of the 'Statutory Agencies' as defined in the 1998 Crime and Disorder Act, and a number of sub groups, linked as follows;





## **Local Strategic Partnerships (LSP)**

---

Local Strategic Partnerships (LSPs) are non-statutory, multi-agency partnerships. LSPs bring together at a local level the different parts of the public, private, community and voluntary sectors; allowing different initiatives and services to support one another so that they can work together more effectively.

The Dartford and Gravesham LSP does not deliver services itself, instead it works with partner agencies and groups to identify overall priorities for the area, coordinates plans and activities to ensure that those priorities are addressed, and that services are delivered in the most cost effective manner.

The formation of an LSP strategy is a requirement of the Local Government Act 2000 – the means by which the borough councils implement their statutory duty to secure the well-being of the community. It is conceived with a long-term trajectory, a ten-year horizon, given the projected scale of development in the area.

## **6. EXPLANATION OF LAA & PSA**

---

### **The Kent Partnership<sup>6</sup>**

The Kent Partnership is made up of representatives from public, private, voluntary and community sectors. It directs and oversees progress on the partnerships vision for Kent and has a key role in encouraging community leadership, new initiatives and the effective delivery of services.

### **The Kent Agreement (LAA)**

The agreement comprises the Local Area Agreement (LAA) and the Local Public Service Agreement (LPSA). It sets out the outcomes and targets that will need to be achieved and how the agencies will work together in the drive to join up services across the county.

The essence of the agreement is the need for all the Kent partners to work together towards a set of outcomes that will make a real and lasting difference to the people of Kent and includes key targets agreed jointly between the Kent partners and government.

### **Public Service Agreements (PSA)<sup>7</sup>**

In July 2007, the Government published *Cutting Crime: A New Partnership 2008–11* (the Crime Strategy), which described a refreshed approach to tackling crime and increasing community safety. This was followed, in October 2007, by the publication of a new set of Public Service Agreements (PSA's), also covering the period 2008/09 to 2010/11.

---

<sup>6</sup> Taken from the Kent Partnership website which can be found at <http://www.kentpartnership.org.uk>

<sup>7</sup> Taken from the National Community Safety Plan 2008/11 which can be found at <http://police.homeoffice.gov.uk/national-policing-plan/national-community-safety-0609?version=3>

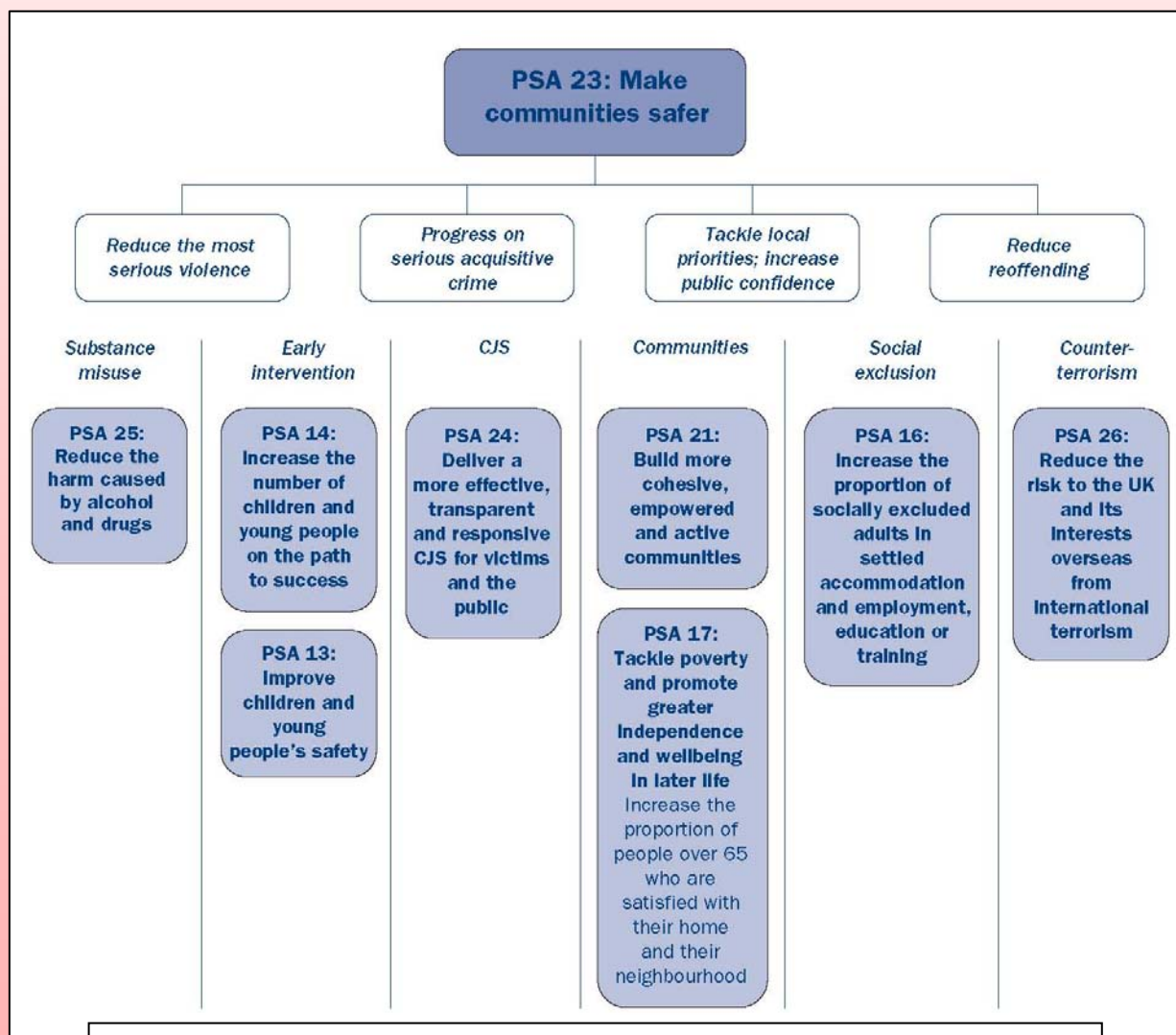


PSA's set out the Government's objectives for public service delivery and explain how success in delivering those objectives will be measured. The PSA's for 2008/09 to 2010/11 demonstrate much more clearly a partnership endeavour at a national level, as well as at regional and local levels: they can only be delivered through government departments and delivery agencies working closely together.

There is a single PSA for improving community safety: PSA 23 Make communities safer, there are also a number of other PSA's that contribute to delivering community safety, and together these support the delivery of the Crime Strategy.

The Crime Strategy describes the importance of increasing public confidence in agencies responsible for community safety, and a greater role for citizens in influencing local priorities and helping to ensure safer and stronger communities.

At its heart, the Crime Strategy sets out a strategic framework for tackling crime and increasing community safety through: early intervention; prevention; enforcement; reducing reoffending; and tackling key drivers of crime (alcohol and drug misuse, and social exclusion). The Prolific and other Priority Offenders (PPO) Programme and the Drug Interventions Programme (DIP), in particular, are two of the most powerful approaches that local partners have available to impact on tackling crime and increasing community safety.



This diagram shows the PSA's covered in the National Community Safety Plan.



## 7. GLOSSARY OF TERMS

<b>ABA</b>	Acceptable Behaviour Agreement
<b>AISP</b>	Alcohol Intervention Support Programme
<b>ARC</b>	Adolescent Resource Centre
<b>ASBI</b>	Anti-Social Behaviour Injunction
<b>ASBO</b>	Anti-Social Behaviour Order
<b>BC</b>	Borough Council
<b>BCS</b>	British Crime Survey
<b>BCU</b>	Basic Command Unit
<b>CDRP</b>	Crime and Disorder Reduction Partnership
<b>CSO</b>	Community Safety Officer
<b>DA</b>	Domestic Abuse or Domestic Violence
<b>DAAG</b>	Drugs and Alcohol Action Group
<b>DBC</b>	Dartford Borough Council
<b>DISP</b>	Drug Intervention Support Programme
<b>GBC</b>	Gravesham Borough Council
<b>GOSE</b>	Government Office of the South East
<b>KA2</b>	Kent Agreement 2
<b>KCC</b>	Kent County Council
<b>KCVS</b>	Kent Crime and Victimization Survey
<b>KDAAT</b>	Kent Drug and Alcohol Action Team
<b>KF&amp;RS</b>	Kent Fire and Rescue Service
<b>LAA</b>	Local Area Agreement
<b>NHW</b>	Neighbourhood Watch
<b>NIM</b>	National Intelligence Model
<b>PACT</b>	Partners and Communities Together
<b>PCSO</b>	Police Community Support Officer
<b>PCT</b>	Primary Care Trust
<b>PPO</b>	Prolific and Priority Offender
<b>PSA</b>	Public Service Agreement
<b>PSU</b>	Public Safety Unit
<b>SSC</b>	Safer Stronger Communities
<b>YOS</b>	Youth Offending Service



## 8. AGENCY CONTACT DETAILS

<p><b>Dartford Borough Council Public Safety Unit</b> Civic Centre, Home Gardens, Dartford, Kent, DA1 1DR</p> <p>Tel: 01322 343 434 <a href="http://www.dartford.gov.uk">www.dartford.gov.uk</a></p>	<p><b>Gravesham Borough Council Public Safety Unit</b> Civic Centre, Windmill Street, Gravesham, Kent DA12 1AU</p> <p>Tel: 01474 337 000 <a href="http://www.gravesham.gov.uk">www.gravesham.gov.uk</a></p>	<p><b>North Kent Police</b> Thames Way, Northfleet, Gravesend, Kent, DA11 8BD.</p> <p>Tel: 01474 369 055 <a href="http://www.kent.police.uk">www.kent.police.uk</a></p>
<p><b>Kent Police Authority</b> 1<sup>st</sup> Floor, Gail House, Lower Stone Street, Maidstone, Kent, ME15 6NB</p> <p>Tel: 01622 677 055 <a href="http://www.kentpa.kent.police.uk">www.kentpa.kent.police.uk</a></p>	<p><b>Primary Care Trust</b> West Kent PCT Wharf House, Medway Wharf Road, Tonbridge, Kent, TN9 1RE</p> <p>Tel: 01732 375 200 <a href="http://www.westkentpct.nhs.uk">www.westkentpct.nhs.uk</a></p>	<p><b>Kent Fire &amp; Rescue Service</b> KF&amp;RS Headquarters The Godlands, Straw Mill Hill, Maidstone, Kent, ME15 6XB</p> <p>Tel: 01622 692121 <a href="http://www.kent.fire-uk.org">www.kent.fire-uk.org</a></p>
<p><b>Kent County Council</b> County Hall, Maidstone, Kent ME14 1XQ</p> <p>Tel: 08458 247 247 <a href="http://www.kent.gov.uk">www.kent.gov.uk</a></p>	<p><b>The Kent Partnership</b></p> <p>Tel: 01622 694 022 <a href="http://www.kentpartnership.org.uk">www.kentpartnership.org.uk</a></p>	



---

## APPENDIX 1

---

### Year One Action Plan 2008 / 2009

**ACQUISITIVE CRIME**

**Key aims: reduce shop lifting, burglary and vehicle crimes such as theft from a vehicle; of a vehicle and vehicle interference.**

**OBJECTIVES:**

Reduce the percentage of people worried about; having their house burgled or having their car stolen. (as measured by the KCVS)

Reduce the number of serious acquisitive crimes to 13.7 per 1,000 population. - Police Target

Kent Agreement Target: NI 21 - Dealing with local concerns about anti-social behaviour and crime by the local authority and police.

PSA 23: Make communities safer.

Point	Action/Project	Tackles Priority Areas:	Outcome	Lead Agency & Partners	Timescales
1	Repeat offenders to be raised to the Prolific and Priority Offenders group where appropriate.	<b>Acquisitive Crime, Violent Crime, Substance Misuse</b>	Increased public confidence in local agencies involved in tackling crime. Reduction in the level of serious acquisitive crimes.	North Kent Police, DBC & GBC, National Probation Service, YOS, HM Prison Service	2008 / 2011
2	SelectaDNA and similar products to be used to deter theft of lead, and other items, and to aid in the identification of offenders.	<b>Acquisitive Crime, Public Confidence</b>	Increased public confidence in local agencies involved in tackling crime and anti-social behaviour. Reduction in the level of serious acquisitive crimes.	North Kent Police	2008
3	Unlawful Markets Intelligence Co-ordinator to monitor all 2nd hand sales, with the aim of disrupting and halting the sale of stolen goods.	<b>Acquisitive Crime</b>	Increased public confidence in local agencies involved in tackling crime and anti-social behaviour. Reduction in the level of serious acquisitive crimes.	North Kent Police	2008 / 2011
4	Introduce the 'Nominated Neighbour' scheme through Neighbourhood Watch to support vulnerable persons and reduce the fear of crime.	<b>Acquisitive Crime, Public Confidence</b>	Increased public confidence in local agencies involved in tackling crime and anti-social behaviour. Reduction in the level of serious acquisitive crimes.	Neighbourhood Watch Coordinator	2008 / 2011
5	Make referrals to the Home Safe or Handy Van schemes for those people who have been a victim of crime or are in an area suffering from a high crime rate.	<b>Acquisitive Crime, Public Confidence</b>	Increased public confidence in local agencies involved in tackling crime and anti-social behaviour. Reduction in the level of serious acquisitive crimes.	DBC & GBC PSU's	2008 / 2011
6	Implement 'Vehicle Watch' through Neighbourhood Watch to reduce vehicle crime and criminal damage to vehicles through crime prevention promotion and public confidence schemes.	<b>Acquisitive Crime, Public Confidence</b>	Improved public awareness to vehicle security. Improved Public Confidence. Reduction in criminal damage and other vehicle crime.	Neighbourhood Watch Coordinators	2008 / 2011
7	Continue scheme whereby the registered keeper of vehicles with high value goods on display are written to and offered crime prevention advice.	<b>Acquisitive Crime</b>	Reduce theft from motor vehicle	North Kent Police, DBC & GBC PSU's	2008/11

**ANTI-SOCIAL BEHAVIOUR**

**Key aims: reduce street nuisance (i.e. rowdy and loutish behaviour) and criminal damage (vandalism and graffiti). To tackle community issues including vehicle nuisance, litter, noise and environmental crime such as fly-tipping and abandoned vehicles.**

**OBJECTIVES:**

Reduce the percentage of the public with a high level of perceived anti-social behaviour in the local area to 15%. - Police Target (as measured by the KCVS).

Reduce the percentage of people who consider specific types of anti-social behaviour to be a problem. (as measured by the KCVS)

Kent Agreement Target: NI 21 - Dealing with local concerns about anti-social behaviour and crime by the local authority and police.

Kent Agreement Target: NI 95 - Improved street and environmental cleanliness (levels of graffiti, litter, detritus and fly posting)

PSA 23: Make communities safer.

Point	Action/Project	Tackles Priority Areas	Outcome	Lead Agency & Partners	Timescales
1	Develop the use of CCTV, including mobile CCTV and radio links to deter and monitor crime and anti-social behaviour. Deployment of mobile CCTV to 'hot spot' locations, identified through the Public Safety Units Tasking & Co-ordination Group.	Violent Crime, Anti-social Behaviour, Aquisitive Crime	Increased public confidence in local agencies involved in tackling crime and anti-social behaviour. Increased percentage of people feeling safe as measured by the Kent Crime & Victimisation Survey Reduction in the percentage of people perceiving ASB as a problem.	DBC & GBC PSU's	2008 / 2011
2	Tackle anti-social behaviour caused by individuals or families through the Dartford and Gravesham multi agency Anti-Social Behaviour Groups, taking appropriate action where possible, i.e. Warning Letters, ABA's and ASBO's.	Public Confidence, Anti-Social Behaviour,	Increased public confidence in local agencies involved in tackling crime and anti-social behaviour. Increased percentage of people feeling safe as measured by the Kent Crime & Victimisation Survey Reduction in the percentage of people perceiving ASB as a problem.	DBC & GBC, North Kent Police, Social Services, Mental Health Service, YOS, Education, Youth Service, RSL's	2008 / 2011
3	Assist with Police Operations (Safer Spring / Summer / Autumn / Winter), aimed at reducing crime and tackling anti-social behaviour.	Anti-Social Behaviour, Public Confidence	Increased public confidence in local agencies involved in tackling crime and anti-social behaviour. Increased percentage of people feeling safe as measured by the Kent Crime & Victimisation Survey Reduction in the percentage of people perceiving ASB as a problem.	North Kent Police, DBC & GBC PSU's	2008 / 2011
4	Run operations involving police and partner agencies aimed at targeting nuisance vehicles.	Anti-Social Behaviour, Public Confidence	Increased public confidence in local agencies involved in tackling crime and anti-social behaviour. Increased percentage of people feeling safe as measured by the Kent Crime & Victimisation Survey Reduction in the percentage of people perceiving ASB as a problem.	North Kent Police, KF & RS, Ambulance Service, Public Safety Units	2008
5	Implement 'Speed Watch' in areas where PACT priorities have identified speeding vehicles as a problem.	Public Confidence, Anti-Social Behaviour,	Train people to use speed detecting equipment on loan from Kent Police in conjunction with Traffic Survey's being carried out by Kent Highway Services.	NHW, PACT, North Kent Police, DBC & GBC PSU's	2008 / 2011
6	Carry out 'Visual Audits' in hot spot areas to identify problems and facilitate solutions.	Anti-Social Behaviour, Public Confidence	Increased public confidence in local agencies involved in tackling crime and anti-social behaviour. Increased percentage of people feeling safe as measured by the Kent Crime & Victimisation Survey Reduction in the percentage of people perceiving ASB as a problem.	DBC & GBC, Neighbourhood Watch, PACT Panels	2008
7	Provide a 24hour response for offensive graffiti removal and a 72hour response for general graffiti removal .	Anti-Social Behaviour, Public Confidence	Increased public confidence in local agencies involved in tackling crime and anti-social behaviour. Increased percentage of people feeling safe as measured by the Kent Crime & Victimisation Survey Reduction in the percentage of people perceiving ASB as a problem.	DBC & GBC Clean Kent Group	2008 / 2011

ANTI-SOCIAL BEHAVIOUR

Continued

8	Graffiti removal kits to be provided to PACT panels and community groups.	Anti-Social Behaviour, Public Confidence	Increased public confidence in local agencies involved in tackling crime and anti-social behaviour.  Increased percentage of people feeling safe as measured by the Kent Crime & Victimisation Survey  Reduction in the percentage of people perceiving ASB as a problem.	DBC & GBC	2008 / 2011
9	Issue Fixed Penalty Notices for littering and dog fouling	Anti-Social Behaviour, Public Confidence	Increased public confidence in local agencies involved in tackling crime and anti-social behaviour.  Increased percentage of people feeling safe as measured by the Kent Crime & Victimisation Survey  Reduction in the percentage of people perceiving ASB as a problem.	DBC & GBC Enforcement Teams	2008 / 2011
10	Actively investigate incidents of fly-tipping, using covert CCTV in hot spot locations and where evidence of an offender is available prosecute for the offence.	Anti-Social Behaviour, Public Confidence	Increased public confidence in local agencies involved in tackling crime and anti-social behaviour.  Increased percentage of people feeling safe as measured by the Kent Crime & Victimisation Survey  Reduction in the percentage of people perceiving ASB as a problem.	DBC & GBC Enforcement Teams,	2008 / 2011
11	Operate multi-agency waste patrols to target vehicles carrying waste without appropriate documentation and licenses.	Anti-Social Behaviour, Public Confidence	Increased public confidence in local agencies involved in tackling crime and anti-social behaviour.  Increased percentage of people feeling safe as measured by the Kent Crime & Victimisation Survey  Reduction in the percentage of people perceiving ASB as a problem.	DBC & GBC Enforcement Teams, North Kent Police	2008 / 2011
12	Where possible carry out local improvements to restrict access to public land to prohibit the use of motorcycles.	Anti-Social Behaviour, Public Confidence	Increased public confidence in local agencies involved in tackling crime and anti-social behaviour.  Increased percentage of people feeling safe as measured by the Kent Crime & Victimisation Survey  Reduction in the percentage of people perceiving ASB as a problem.	DBC & GBC PSU's	2008 / 2011
13	Carry out a joint operation with North Kent Police aimed at tackling nuisance motorbikes.	Anti-Social Behaviour, Public Confidence	Increased public confidence in local agencies involved in tackling crime and anti-social behaviour.  Increased percentage of people feeling safe as measured by the Kent Crime & Victimisation Survey  Reduction in the percentage of people perceiving ASB as a problem.	DBC & GBC PSU's, North Kent Police	2008
14	Enforce the legislation under the Clean Neighbourhood and Environment Act 2005.	Anti-Social Behaviour, Public Confidence	Increased public confidence in local agencies involved in tackling crime and anti-social behaviour.  Increased percentage of people feeling safe as measured by the Kent Crime & Victimisation Survey  Reduction in the percentage of people perceiving ASB as a problem.	DBC & GBC Enforcement Teams,	2008 / 2011

**PUBLIC CONFIDENCE**

Key aims: increase the number of people feeling safe and reduce the fear of crime by being more citizen focused in our approach, reflecting the needs and expectations of our communities. We will keep communities informed of the actions undertaken by the partnership in tackling their concerns and seek feed back on the progress of those actions.

**OBJECTIVES:**

Increase the percentage of people who feel safe; overall, in the daytime walking alone, at night walking alone and at home alone at night. (measured by the KCVS)

Kent Agreement Target: NI 03 - Civic participation in the local area.

Kent Agreement Target: NI 21 - Dealing with local concerns about anti-social behaviour and crime by the local authority and police.

PSA 23: Make communities safer.

Point	Action/Project	Tackles Priority Areas:	Outcome	Lead Agency & Partners	Timescales
1	The Public Safety Units will be responsible for publicising the good work being undertaken to reduce crime and disorder by producing regular press releases.	<b>Public Confidence</b>	Increased percentage of people feeling safe as measured by the Kent Crime & Victimisation Survey	DBC & GBC PSU's, & All Partners	2008 / 2011
2	Information and advice on crime and anti-social behaviour to be available online. Council websites to be updated where possible online reporting of anti-social behaviour to be enabled.	<b>Public Confidence, Anti-social Behaviour</b>	Increased public confidence in local agencies involved in tackling crime and anti-social behaviour. Increased percentage of people feeling safe as measured by the Kent Crime & Victimisation Survey. Reduction in the percentage of people perceiving ASB as a problem.	DBC & GBC PSU's	2008
3	Ensure that residents are kept informed of the actions that have been taken to deal with their complaints or concerns.	<b>Public Confidence, Anti-Social Behaviour, Violent Crime, Acquisitive Crime</b>	Increased public confidence in local agencies involved in tackling crime and anti-social behaviour. Increased percentage of people feeling safe as measured by the Kent Crime & Victimisation Survey. Reduction in the percentage of people perceiving ASB as a problem.	DBC & GBC PSU's, & All Partners	2008 / 2011
4	Hold Community Safety Events using the North Kent Crime Prevention Panel and partner agencies focused on the needs of the area and offering personal and home safety advice.	<b>Public Confidence, Acquisitive Crime</b>	Arrange and hold five community safety events per borough.	DBC & GBC PSU's, & All Partners	2008
5	Improve the communication between communities and the CDRP through, parish councils, community groups and the PACT panels.	<b>Public Confidence</b>	Increased public confidence in local agencies involved in tackling crime and anti-social behaviour. Reduction in the percentage of people perceiving ASB as a problem.	DBC & GBC PSU's, & All Partners	2008 / 2011

**SUBSTANCE MISUSE**

**Key aims: to disrupt the illegal drugs markets and to raise the awareness of the harm caused by drugs and alcohol and reduce underage drinking.**

**OBJECTIVES:**

Reduce the number of night time economy alcohol/drug violence related offences in town centres. - Police Target

Kent Agreement Target: NI 39 - Alcohol-harm related hospital admission rates.

Kent Agreement Target: NI 40 - Drug users in effective treatment.

PSA 25: Reduce the harm caused by Alcohol and Drugs.

Point	Action/Project	Tackles Priority Areas:	Outcome	Lead Agency & Partners	Timescales
1	Repeat offenders to be raised to the Prolific and Priority Offenders group where appropriate.	<b>Acquisitive Crime, Violent Crime, Substance Misuse,</b>	Increased public confidence in local agencies involved in tackling crime.  Reduction in the level of serious acquisitive crimes.	North Kent Police, DBC & GBC, National Probation Service, YOS, HM Prison Service	2008 / 2011
2	Police Operation PILOT to be run in town centres and will include the use of drugs detecting equipment and passive sniffer dogs to detect drugs offenders and reduce substance misuse .	<b>Substance Misuse, Anti-social Behaviour</b>	Reduction in alcohol related violence and street nuisance	North Kent Police	2008 / 2011
3	Create designated 'Alcohol Control Zones' to tackle ASB in public spaces caused by the misuse of alcohol.	<b>Anti-Social Behaviour, Substance Misuse</b>	Implement control zones as areas are identified, where appropriate.	DBC & GBC PSU's	2008 / 2011
4	Tier 2 alcohol intervention service. Reduce alcohol related illness, crime and domestic abuse.	<b>Violent Crime, Anti-Social Behaviour</b>	Carry out between 40-50 one-to-one interventions.	KDAAT	1 year 4.08 3 yrs based on evidence of success
5	Tier 2 drugs and alcohol education programme.	<b>Young People, Substance Misuse</b>	Aimed at those hardest to reach, excluded from school and who are particularly vulnerable to risk taking behaviours.  Drug/alcohol education delivered to each and every project / group within ARC. Delivers a range of preventative programmes throughout the year.	West Kent PCT, KDAAT	1 year 4.08 3 yrs based on evidence of success
6	Engage drug users in effective treatment.	<b>Substance Misuse, Anti-social Behaviour</b>	Numbers of drugs users in treatment,  Percentage retained in treatment for 12 weeks or more	KDAAT	2008 / 2011
7	Promote drug and alcohol awareness in young people by holding two SNAP (Say No And Phone) Discos.	<b>Young People, Substance Misuse</b>	Greater awareness in young people of alcohol and substance misuse issues.	North Kent Police, DBC & GBC	2008
8	Test purchase operations to be run by North Kent Police, Trading Standards and local authority Licensing Teams, visits to Off Licenses to ensure alcohol is not sold to under 18's.	<b>Young People , Substance Misuse</b>	Reduction in the number of reports of underage drinking and associated anti-social behaviour.	North Kent Police, KCC Trading Standards	2008 / 2011
9	Drugs Safes to be installed in Licensed Premises as amnesty boxes and or secure boxes for seized drugs.	<b>Substance Misuse</b>	Reduction in substance misuse associated with the Night Time Economy.	North Kent Police	2008
10	Safe Sensible Social Campaign to be run to reduce damage caused by alcohol.	<b>Substance Misuse</b>	Reduction in alcohol related violence and harm to individuals	DBC & GBC North Kent Police, West Kent PCT	2008
11	Two evening road shows to be held in each town centre aimed at educating the public on the effects of substance and alcohol misuse.	<b>Substance Misuse, Public Confidence</b>	Reduce substance misuse through education,  Greater awareness of alcohol and substance misuse issues.	North Kent Police, DBC & GBC PSU's, KCC Social Services, West Kent PCT, KF& RS, Ambulance Service	2008 / 2011
12	Drugs education programme to be rolled out to community groups to raise awareness of drug and the effects of substance misuse.	<b>Substance Misuse</b>	Reduce substance misuse through education,  Greater awareness of alcohol and substance misuse issues.	North Kent Police	2008 / 2011

**VIOLENT CRIME**

**Key aims: to reduce violent crime, including sexual offences, violence in the night time economy and repeat incidents of domestic abuse.**

**OBJECTIVES:**

Reduce the percentage of Violent and Other crimes in the Night Time Economy.

Reduce the percentage of people worried about; being mugged / robbed or physically attacked. (measured by the KCVS)

Reduce the percentage of repeat incidents of domestic abuse to 22%. - Police Target

Kent Agreement Target: NI 15 - Serious Violent Crime rate.

Kent Agreement Target: NI 21 - Dealing with local concerns about anti-social behaviour and crime by the local authority and police.

Kent Agreement Target: NI 32 - Repeat incidents of domestic abuse.

PSA 23: Make communities safer.

PSA 25: Reduce the harm caused by Alcohol and Drugs.

Point	Action/Project	Tackles Priority Areas	Outcome	Lead Agency & Partners	Timescales
1	Repeat offenders to be raised to the Prolific and Priority Offenders group where appropriate.	Acquisitive Crime, Violent Crime, Substance Misuse,	Increased public confidence in local agencies involved in tackling crime.  Reduction in the level of serious acquisitive crimes.	North Kent Police, DBC & GBC, National Probation Service, YOS, HM Prison Service	2008 / 2011
2	Target repeat offenders of violence in Night time economy (NTE). Exclusion of persons responsible for violence in the NTE through DTAC/G-SAFE and the Safer Socialising Scheme.	Substance Misuse, Violent Crime	Increased public confidence in local agencies involved in tackling crime and anti-social behaviour.  Reduction in the level of proven re-offending by young adult offenders and the level of serious re-offending.	D-TAC, G-Safe, North Kent Police	2008 / 2001
3	Carry out review of Licensed Premises.	Substance Misuse, Anti-social Behaviour, Violent Crime	Reduction in crime associated with the Night Time Economy.	North Kent Police, DBC & GBC Licensing Teams	2008
4	Introduction of the Gravesend Taxi Driver Safety scheme.	Violent Crime,	Reduction in reported violence offences against taxi drivers and increase in offences brought to justice through better evidence capture through CCTV.	North Kent Police, GBC PSU	2008
5	Op CHALKBOARD to reduce violent crime in educational establishments. Was started at the beginning of this year, and gives responsibility for low level incidents to be dealt with by schools with a reduction in reported crimes to police.	Violent Crime, Young People	The publicity of OP CHALKBOARD and protocols in place for monitoring Police attendance and outcomes to attending incidents in schools.	North Kent Police	2008
6	Promote E-Safety awareness in schools to reduce criminal opportunities/bullying using West Kent Safer School model.	Violent Crime, Young People	Increased awareness of the risks of online activity amongst school clusters across North Kent BCU.	North Kent Police, Youth Sub Group	2008
7	Reduce crime on public transport (primarily buses) and disrupt specific bus services used by gangs to venues such as Bluewater and on relevant school routes.	Violent Crime, Young People	The Special Constabulary will work with the Public Safety Units, PCSO's and NTT when additional resources are required.	North Kent Police, British Transport Police, DBC & GBC PSU's	2008
8	A One-Stop Shop to be set up to offer help, advice and support to victims of Domestic Abuse	Violent Crime	One Stop Shop to be set up to run for two hours once a week.  Reduction in the number of repeat victims of domestic abuse.	Violent Crime Sub Group, North Kent Domestic Abuse Forum, North Kent Police, All Partners	2008
9	Implement MARAC's (Multi Agency Risk Assessment Conferences) for victims of Domestic Abuse and ensure that the perpetrators are brought to justice.	Violent Crime	Reduction in the number of repeat victims of domestic abuse.	Violent Crime Sub Group, North Kent Police, All Partners	2008 / 2009
10	Continue to run Grabbacab in the Dartford Town Centre to reduce the number of incidents in the town centre associated with the night time economy.	Violent Crime, Anti-social Behaviour	Increased public confidence in local agencies involved in tackling crime and anti-social behaviour.  Reduction in the percentage of the public who perceive drug use/dealing or drunk and rowdy behaviour to be a problem in their area.	Dartford PSU	Till Sept 2008. Extension of the campaign is subject to further funding
11	Continue to run Talk to Us campaign to reduce domestic abuse.	Violent Crime	Reduction in the number of repeat victims of domestic abuse.	Rethink Sahayak, North Kent Police, Violent Crime Subgroup, Domestic Abuse Forum	Till Sept 2008. Extension of the campaign is subject to further funding

**YOUNG PEOPLE**

**Key aims: to ensure the safety of young people, reduce the risk of young people being victimised or becoming involved in criminal behaviour and to encourage a positive profile of young people in the community.**

**OBJECTIVES:**

Reduce the percentage of the public with a high level of perceived anti-social behaviour in the local area to 15% - Police Target (as measured by the KCVS).

Reduce the percentage of people who consider specific types of anti-social behaviour to be a problem. (as measured by the KCVS)

Kent Agreement Target: NI 21 - Dealing with local concerns about anti-social behaviour and crime by the local authority and police.

Kent Agreement Target: NI 110 - Young people's participation in positive activities.

Kent Agreement Target: NI 111 - First time entrants to the Youth Justice System aged 10 to 17.

Kent Agreement Target: NI 117 - 16 to 18 year olds who are not in education, employment or training.

PSA 13: Improve children and young people's safety

Point	Action/Project	Tackles Priority Areas:	Outcome	Lead Agency & Partners	Timescales
1	Improve provision for teenagers and young people in parks and open spaces by providing suitable youth equipment such as multi-use games areas (MUGA's) and teen shelters.	<b>Young People, Anti-Social Behaviour</b>	Creation of safe, accessible areas for young people of all ages.	DBC & GBC Youth Sub Group	2008 / 2011
2	Open a Youth Café in Dartford to give young people a place they own, where they can meet and socialise in a safe environment and seek help and advice	<b>Young People,</b>	Work in partnership with KCC to initially have 1 session a week, increasing opportunities leading to inclusion and integration within peer groups and the local community. All project work will be linked to the ECM agenda	YMCA, Youth Sub Group	2008
3	Establish a partnership protocol for involving young people and seeking their views.	<b>Young People</b>	Establish good links with Dartford Youth Council. Encourage Youth Council to have a broader representation of young people in the local community and to support the formation of local youth forums.	Youth Sub Group, Youth Service	2008
4	Ensure all agencies are aware of the Drug Intervention Support Programme and Alcohol Intervention Support Programme (DISP & ASIP)	<b>Young People, Substance Misuse, Anti-Social Behaviour</b>	Schools review policies and procedures in light of the programmes. Reduction in the number of new entrants to the Criminal Justice System.	Youth Sub Group, DAAG Group, Connexions, School Clusters	2010
5	Map access and referral routes for support services for drug problems and make them more transparent	<b>Young People, Substance Misuse, Anti-Social Behaviour</b>	Comprehensive list of all services around drugs and alcohol to be produced/provided.	Youth Sub Group, DAAG Group, Connexions, School Clusters	2008 / 2009
6	Establish the views of young people with regard to Domestic Abuse and produce actions based on those views.	<b>Young People, Violent Crime</b>	Educate children to understand that DA is unacceptable. Reduce the levels of DA.	North Kent Domestic Abuse Forum, Violent Crime Group, Youth Sub Group	2008
7	Develop ARC (Adolescent Resource Centre) services across the area so provision is the same in Dartford and Gravesham.	<b>Young People</b>	Dartford ARC to be established and services provided.	ARC, YMCA, Youth Sub Group	2008 / 2011
8	ARC - Group work and preventative programmes.	<b>Young People, Anti-Social Behaviour, Acquisitive Crime, Substance Misuse</b>	To deliver a diverse range of activities throughout the year alongside group work programmes which includes all risk taking behaviours and bullying whilst promoting themes contained within the ECM agenda.	ARC, YMCA, Youth Sub Group	2008 / 2011
9	Develop Youth Forums at ward level, tied into Parish Councils and local PACT panels to ensure young people have a voice in the community.	<b>Young People, Public Confidence,</b>	Youth Council to attend Parish council meetings promoting their activities with the aim of getting a youth representative on each Parish council.	Youth Council, Youth Sub Group, DBC & GBC	2008 / 2011
10	Continue to work in partnership to provide positive activities for those young people at risk of offending and those not in education, employment and training (NEET).	<b>Young People, Anti-Social Behaviour, Acquisitive Crime, Substance Misuse</b>	To deliver innovative and diverse Outreach/Detached project sessions in the evenings and weekends and work with training providers to promote projects that engage the NEET group.	KCC Youth Service, Connexions, Youth Sub Group	2008 / 2011
11	Ensure that agencies refer those young people at risk of becoming involved in criminal or anti-social behaviour to the Power Project in each area.	<b>Young People, Anti-Social Behaviour, Acquisitive Crime</b>	Enable the Power Project in both areas and refer those at risk of becoming involved in criminal or anti-social behaviour.	ARC, Youth Sub Group	2008 / 2011

